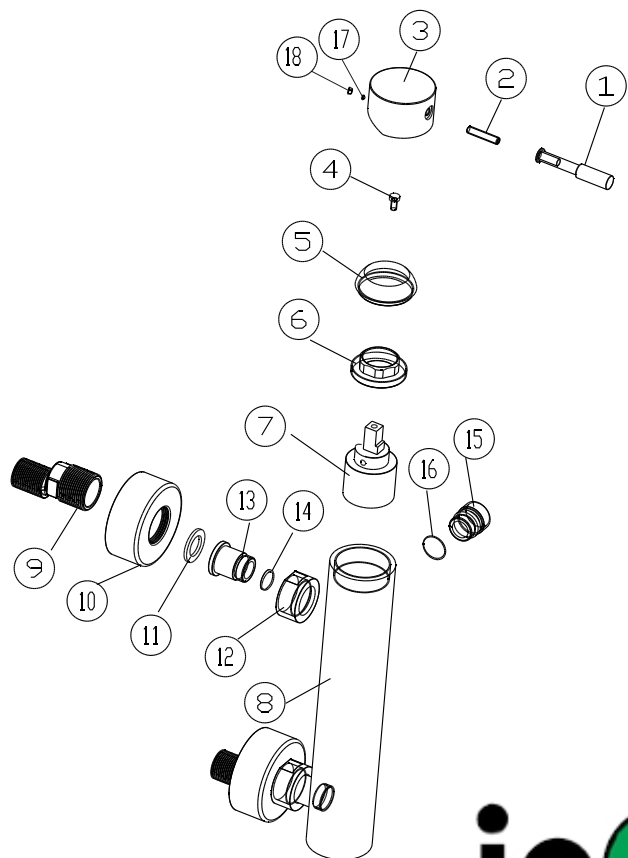


# Shower mixer

## Installation Instruction

Please read this instruction carefully so as to avoid the installation difficulty.

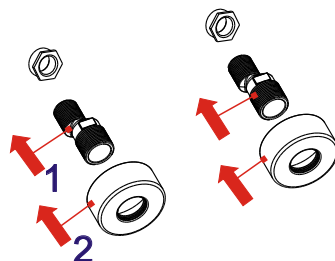


**inocal**

## Components List

No.	Component	Material	Quantity
1	Handle	BRASS	1
2	Female allen screw	S.S304	1
3	Handle cover	BRASS	1
4	Cross-head screw	S.S304	1
5	Cap	BRASS	1
6	Cartridge fastener	BRASS	1
7	Ceramic cartridge		1
8	Main body	BRASS	1
9	S-union	BRASS	2
10	Escutcheon	BRASS	2
11	Flat washer	NBR	2
12	Screw joint	BRASS	2
13	Screw	BRASS	2
14	O-ring	NBR	2
15	Union for hose	BRASS	1
16	O-ring	NBR	1
17	Female allen screw	SUS304	1
18	Ornate plug	ABS	1

## Installation Step

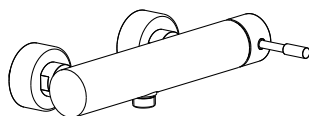
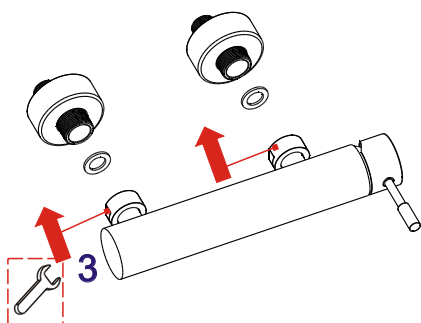


1

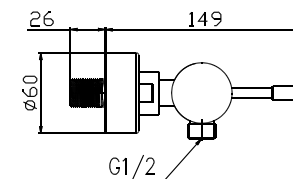
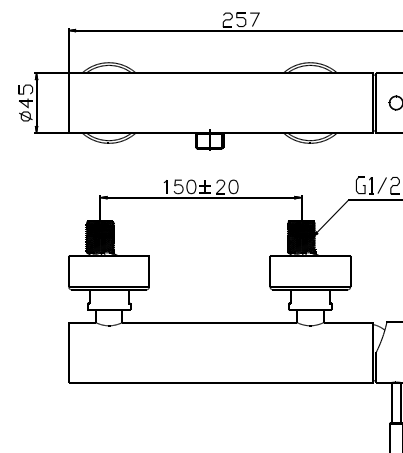
2

3

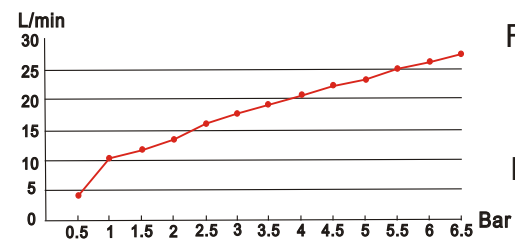
4



## Installation Fig



## Flow rate Curves



Test pressure: 1.6MPa (16bar)

Flow pressure:

Min 0.05MPa

Max 1.60MPa

Recommended pressure:

0.1MPa to 0.8MPa (1 to 8 bar)

## Note

- 1.Ensure to clean the water supply pipe before installing to avoid being jammed.
- 2.The cold-water supply must be connected on the right and the hot-water supply on the left.
- 3.Check the installing dimension according to the Figure and ensure it is installed correctly.
- 4.Hot-water inlet must not be over 80°C.